

Rhythm for the Beginning Student

C Chord

A musical staff in bass clef with a 4/4 time signature. The staff is divided into four measures by vertical bar lines. Each measure contains a C chord, represented by three blue circles: G on the second line, E on the second space, and C on the first line. The notes are positioned as follows: Measure 1: G on line 2, E on space 2, C on line 1; Measure 2: G on line 2, E on space 2, C on line 1; Measure 3: G on line 2, E on space 2, C on line 1; Measure 4: G on line 2, E on space 2, C on line 1.

1 2 3 4 1 2 3 4 1 2 3 4 1 2 3 4

A musical staff in bass clef with a 4/4 time signature. The staff is divided into two measures by a vertical bar line. Each measure contains a C chord, represented by three blue circles: G on the second line, E on the second space, and C on the first line. The notes are positioned as follows: Measure 1: G on line 2, E on space 2, C on line 1; Measure 2: G on line 2, E on space 2, C on line 1.

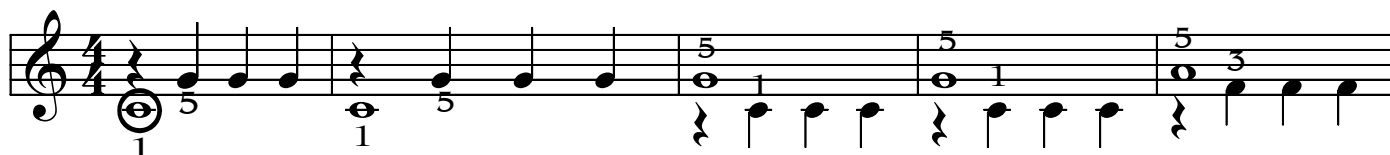
1 2 3 4 1 2 3 4

Exercise

1. This exercise is for the left hand.
2. The time signature is 4/4, 4 beats in a measure and a quarter note = 1 beat.
3. Count out loud and in a steady beat.
4. The fingering for this chord is: C=5, E=3, G=1.

Exercises for the Beginning Student

1. This exercise is written in two parts. Both parts are played with one hand. Part 1 plays a whole note which equals 4 beats, and Part 2 plays a rest and 3 quarter notes. Each part contains 4 beats.
2. Play the whole note and hold while playing the quarter notes. This practice strengthens the fingers and prepares the fingers for independence.
3. Practice each measure several times, adding a measure one at a time.



Hold the C with the thumb while playing the G's with the 5 finger.

